

Creating CAB files for the VectorDraw components using the vdcab.exe utility

For version 4.x of VectorDraw components (Professional, Standard and Viewer) we developed a utility to make the procedure of making a CAB file for Internet/Intranet installation much easier (the manual procedure can be found here <http://www.vdraw.com/Export/41019122.htm>)

A. Requirements:

- The procedure takes place on the "Development machine".
- The component(s) must be registered in the "Development machine" (regsvr32.exe).
- The component(s) must be registered with their Serial and Authorize keys (vdAuthorize utility).
How to check if ii and iii are correct: Open VisualBasic 6, VisualBasic.NET, Delphi or VisualC# and in a new project try to add the VectorDraw Component. Run this project to see if this form is ok.
- In the folder that the component(s) is there should be also the other "Dependency files" like vdxfiles.dll, vdimg.dll etc. See our webpage http://www.vdraw.com/redis_v4_Unicode.htm for the dependency files.
- In order to correct ok your HTML, PHP, ASPX and/or ASP pages you should acquire a LicVal License. Contact our sales department sales@vdraw.com for more information.

B. Procedure:

- 1) Extract the contents of the vdcab.zip file to a folder in your disk. these folder should contain these files : **GLU32.DLL***, **OPENGL32.DLL***, **msvcp60.dll**, **lpk_tool.exe**, **lpk_tool.hlp**, **lpk_tool.txt**, **MAKECAB.EXE**, **signcode.exe** and **vdcab.exe**
** These 2 dlls (OpenGL) are not needed for VectorDraw Standard.*

- 2) Run the **vdcab.exe**. This form will appear :

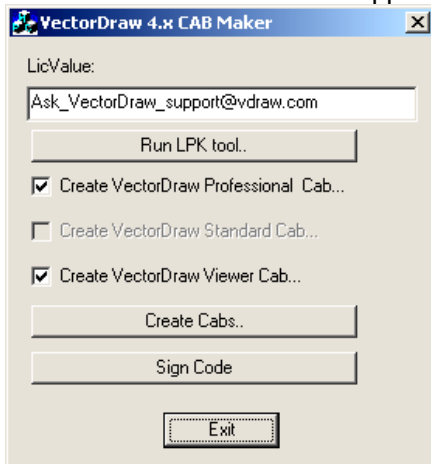


Fig. 1

Note : You see that the "Standard" Option is disabled. This is because the "Standard" component is not registered in the machine. By default all other correctly registered components are selected.

- 3) Select the component you want to make a CAB. Deselect all others.
- 4) Add the LicVAL you acquired from us for the server you want to use the component. If you don't have this LicValue contact or sales department sales@vdraw.com for more information.
- 5) Press the "Run LPK tool.." button. This form will appear :

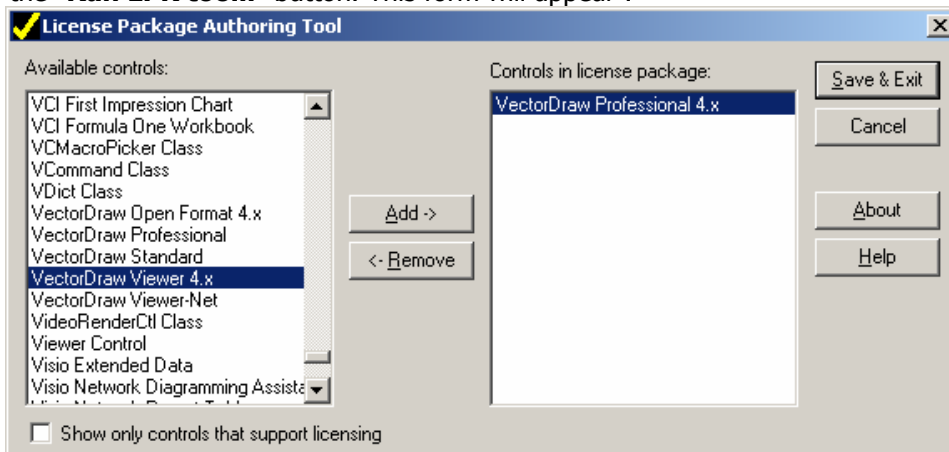


Fig. 2

- On the left list select the VectorDraw component (in this example VectorDraw Professional 4.x) and click the "Add ->" button. Note that if you want to create CABs for more than one component you should select these components before clicking the "Add ->" button.
- The component(s) that you want to create LPK file are now in the right list.
- Press the "Save & Exit" button and the *Save As* form will appear:

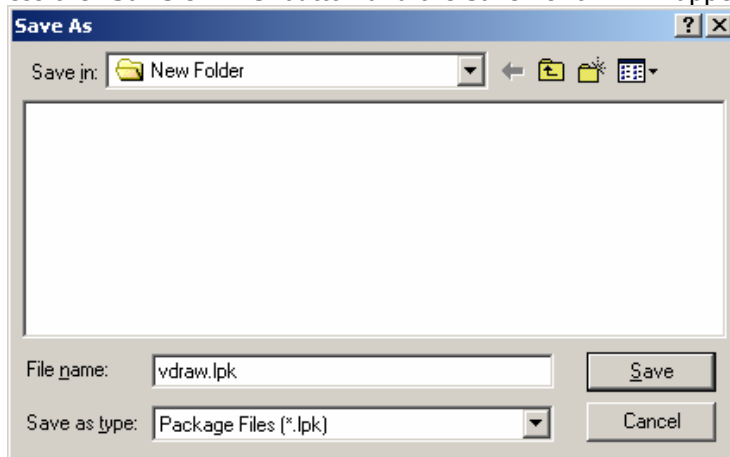


Fig. 3

- Go to the folder that contains the files you extracted earlier and save there the LPK file as **vdraw.lpk**. If you name this file different then you will have to make some changes manually so it's better to name it **vdraw.lpk**.
- Click the "Save" button. If the process of making the LPK file is ok this message should appear :

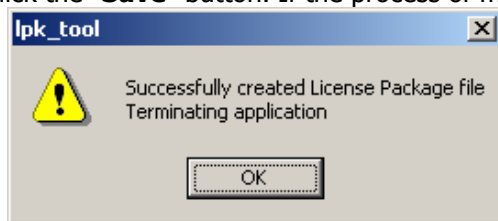


Fig. 4

- After creating the LPK file (step 5) press the "Create Cabs" button (see Fig. 1). A "command window" will open and some files will be created.

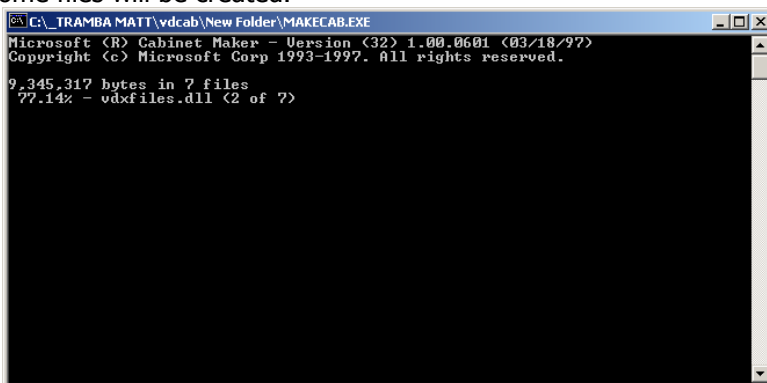


Fig. 5

The files that will be created are:

Professional:

- vdpro.bat
- vdpro.ddf
- vdpro.htm
- vdpro.inf
- vdpro.cab

Standard:

- vdstd.bat
- vdstd.ddf
- vdstd.htm
- vdstd.inf
- vdstd.cab

Viewer:

- vdview.bat
- vdview.ddf
- vdview.htm
- vdview.inf
- vdview.cab

Also a DWG file will be created (vdtest1.dwg) for testing.

Note : The .inf, .ddf and .bat files are required only for customization.

7) If the process of making the CAB file(s) is ok this message should appear :

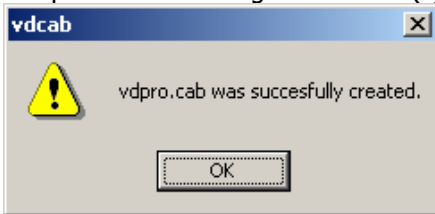


Fig. 6

8) If you want to add a key from VeriSign or similar you can use the "Sign Code". This step is optional.

That's it. The CAB(s) are made and also a simple html page to test it.

C. Testing Procedure:

- 1) Upload to your server, in the same directory these files :
 - a. vdpro.htm (and/or vdstd.htm and/or vdview.htm)
 - b. vdraw.lpk
 - c. vdpro.cab (and/or vdstd.cab and/or vdview.cab)
 - d. vdtest1.dwg
- 2) In a clean pc (without any VectorDraw components installed) open the Internet Explorer (must be version 5 and above) and type the url of this test html page. A page like bellow (Fig. 7) should appear. After pressing the "Open" button on this page the drawing vdtest1.dwg should open in VectorDraw (Fig. 8).

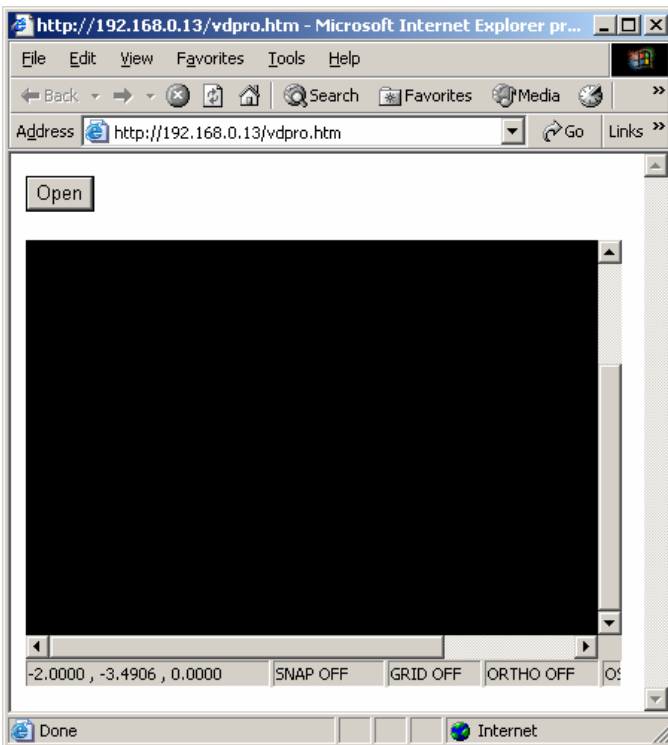


Fig. 7

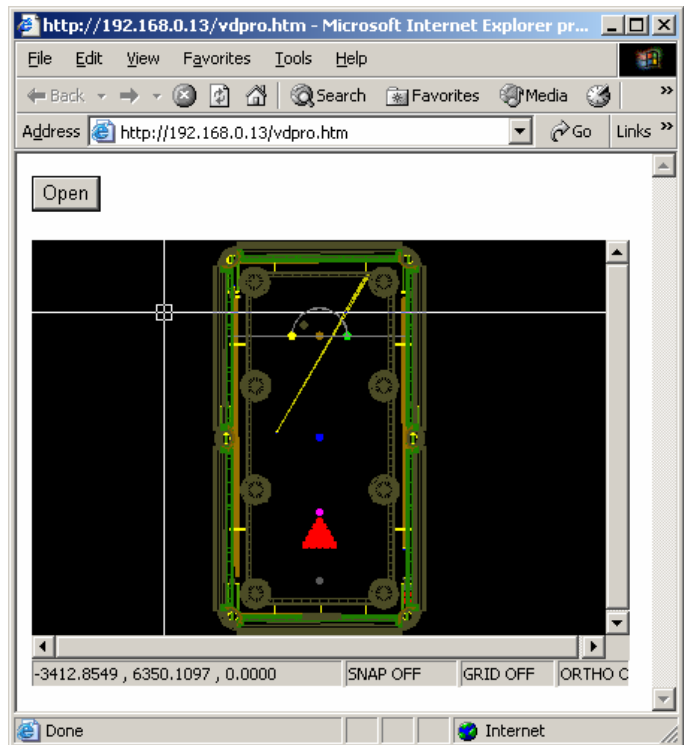


Fig. 8